



CR Radiant Ceiling Panel Heaters Installation and User Instructions

IMPORTANT: READ CAREFULLY BEFORE USE AND KEEP FOR FUTURE REFERENCE.

SAFETY INSTRUCTIONS

- Check the heater for damage before installation. If the supply cord is damaged, it must be replaced by the manufacturer or its service agent.
- The heater must be installed by a qualified electrician in accordance with current wiring regulations. The heating must be connected to the fixed wiring and protected by 30mA residual current device (RCD) and a suitable fuse or circuit breaker.
- The heater must be connected to a circuit with means for disconnection from the supply having contact separation of at least 3mm in all poles.
- This heater is a Class I appliance and to comply with the Wiring Regulations it must be earthed.
- The ceiling surface must be capable of supporting the weight of the heater. If in doubt please check.
- The heater must not be installed at a height less than 1.8m from the floor.
- Do not install the heater directly below electrical outlets when using the optional ceiling mounting bracket.
- **WARNING:** This heater is not equipped with a device to control the room temperature. Do not use this heater in small rooms when they are occupied by persons not capable of leaving the room on their own, unless constant supervision is provided.
- This heater must not be used in ambient temperatures exceeding 30°C.
- Do not use in hazardous areas.
- The surface of the panel can be cleaned using a soft cloth and a mild aqueous mild detergent. The heater must be switched off, allowed to cool and isolated from the electrical supply before cleaning.
- Children of less than 3 years should be kept away unless continuously supervised. Children aged from 3 years and less than 8 years shall only switch on/off the appliance provided that it has been placed or installed in its intended normal operating position and they have been given supervision or instruction concerning use of the appliance in a safe way and understand the hazards involved. Children aged from 3 years and less than 8 years shall not plug in, regulate and clean the appliance or perform user maintenance.
- **CAUTION — Some parts of this product can become very hot and cause burns. Particular attention has to be given where children and vulnerable people are present.**

DESCRIPTION & SPECIFICATION

CR radiant heaters are designed to provide primary, localised or perimeter heating in residential, commercial and industrial buildings. For optimum performance the heaters should be installed between 2.4m and 3.5m above floor level either by direct ceiling mounting using the optional bracket (CRB), laid into a standard 24mm "T" section suspended ceiling grid or suspended from the ceiling using suitable chains or wires.

The heaters can be switched ON/OFF manually using a suitable double pole switch to provide localised heating. However for optimum temperature control we recommend using a suitable room thermostat. For advice please contact your distributor.

Model	3CR	6CR
Power	300W	600W
Voltage	230V~	230V~
Current	1.3A	2.6A
Dimensions (L x W x H)	595 x 595 x 25mm	1195 x 595 x 25mm
Weight	6.2kg	11.9kg
Minimum installation height	1.8m	1.8m
Recommended installation height	2.4 - 3.5m	2.4 - 3.5m
IP rating	IP 55	IP 55

INSTALLATION

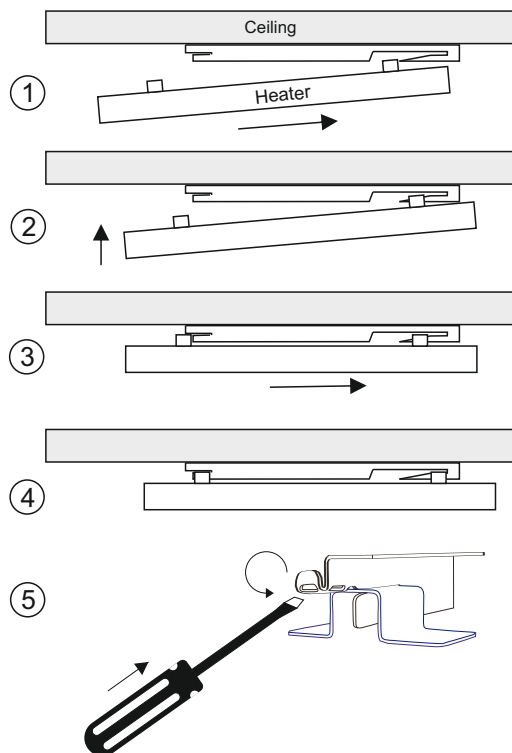
- The heater must be installed at least 1.8m from the floor and 0.5m from the wall.
- The surface of the heater must be a minimum of 10cm from flammable materials.

Suspended Ceiling Mounting

Heaters can be laid directly into standard exposed 24mm “TEE” section suspended ceiling systems. It is important to confirm the ceiling system can support the weight of the panel(s). If necessary additional support should be provided.

Ceiling Surface Mounting (using the optional CRB bracket)

- Assemble the bracket by following the supplied instructions.
- Use the bracket as a template to mark the four fixing holes.
- Attach the bracket to the ceiling surface using 4 suitable fixings(not supplied).
- Follow steps 1 - 4 to slide the heater onto the bracket.
- Using either the CRB tool or a flat bladed screwdriver rotate the 2 bracket locking tabs counterclockwise through 90 degrees as shown in Step 5.



Suspended from the Ceiling

CR heating panels can be suspended from a suitable ceiling surface or beam using suitable chains or wire rope (not supplied). The ceiling or beam must be capable of supporting the weight of the panel(s). If in doubt please check.

Chains or wire rope are attached to the panel using the holes in the 4 brackets on the back of the panel.

Electrical Connections

Electrical connection must be carried out by a qualified electrician in accordance with the current Wiring Regulations.

Important: Confirm that the voltage marked on the heater label is the same as the supply voltage and that the circuit is suitable for the installed heating load.

- The heater must be connected to the installation fixed wiring and protected by a suitable fuse or circuit breaker.
- The circuit must be protected by a 30mA residual current device installed in the distribution board.
- A double pole switch with a 3mm minimum separation in all poles should be installed adjacent to the heater to provide local isolation.
- This heater is a Class 1 appliance and MUST be connected to the supply earth.

Connections:

- Green/Yellow core connect to switch earth terminal marked (E) or \perp
- Brown core connect to live terminal (L)
- Blue core connect to neutral terminal (N)

MAINTENANCE

If required the surface of the heating panel can be wiped clean using a soft cloth and mild aqueous detergent. The heater must be switched off, isolated from the electrical supply and allowed to cool before cleaning.

WARRANTY

FLEXEL CR radiant ceiling panel heaters are supplied with a 2 year warranty from the date of purchase. The warranty does not cover damage resulting from transportation, incorrect installation or operation. Any heater found to be faulty will be repaired or replaced. The warranty does not cover consequential damage.

✉ FLEXEL International Ltd
Telford Road
Glenrothes
KY7 4NX
☎ 01592 757313
✉ sales@flexel.co.uk
🌐 www.flexel.co.uk